

San Saba Table Lamp



70-445A San Saba Table Lamp 15"x 15"x 33"

Rating: Not Rated Yet

[Ask a question about this product](#)

Description

Hand Forged Iron : San Saba Table Lamp

70-445A without Shade

70-445AG with Glass Shade

70-445AB with Burlap Drum Shade

70-445AC with Natural Linen Drum S.

70-445AL with Leather Drum Shade

Burlap Shade
70-703G
13" x 15" x 10"



Linen Shade
70-703H
13" x 15" x 10"



Leather Shade
70-703K
13" x 15" X 10"



Rawhide Shade
70-703C
16" x 11"



70-713
Table Lamp Shade
20" x 13"



Garden Blush



Thistle



Oakdale



Turquoise



Morning Sun



Dove Gray

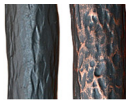
Iron Finishes

Our standard iron finish is our special natural black over a green rust proof primer. Please note that our other available finishes require a 10% premium.

Iron finishes available:

Black (Standard) / Aged Pewter (10%) / Aged Rust (10%) / Aged Bronze (10%)

Iron Finishes



Black

Aged Bronze



Aged Pewter

Aged Rust

*Product Care

For all of our iron products we recommend furniture polish be used regularly. We ship all of our copper tops out with a wax coating. We recommend that you wax your copper table every 1-2 months.

Reviews

There are yet no reviews for this product.